

# LEVEL 3

## A guide to using this document

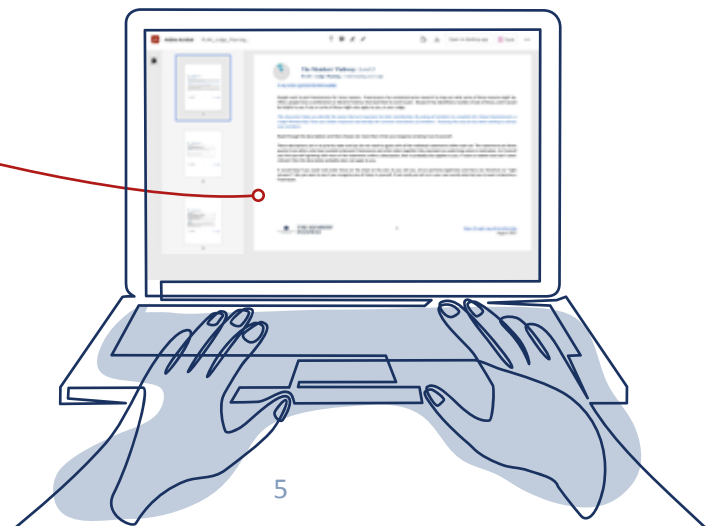
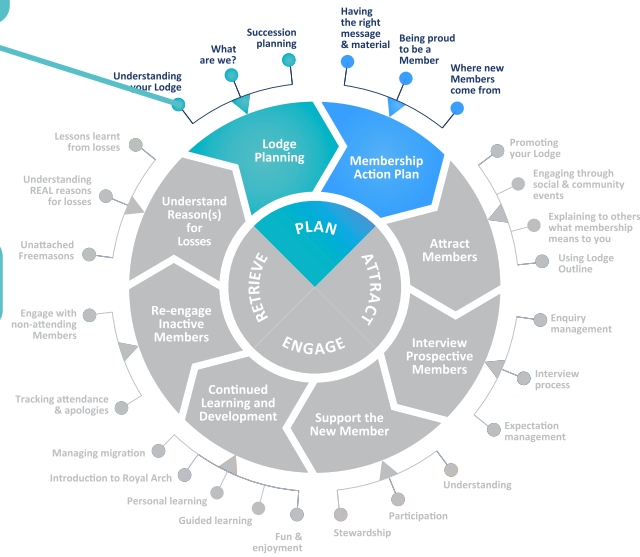
- This is the **Level 3 single page access key** to all the relevant details in each of the Threads within each section.
- The start of the thread is shown in the coloured boxes like this **Clicking on any of these items reveals the detail for the item shown.**
- The lines between the elements show you how each document relates to the others. These can be accessed by clicking on the white boxes like this
- The click through documents are mostly one page and at most three pages long
- After reading an item close the tab before clicking on another item.

Understanding your Lodge

Example questions for reviewing your Lodge

Values questionnaire

Time & cost commitments



# LEVEL 3



## RETRIEVE 'KEY' SUGGESTED FOR ALMONERS

The MCF Almoners' Guide

CLICK ANY BOX FOR EXAMPLES, TEMPLATES OR CHECKLISTS

